



URL : www.kariyushi.co.jp



6 HOTEL Room : 874 Maxim Capacity : 2,464



OKINAWA KARIYUSHI RESORT EXES ONNA

Room : 90 Maxim Capacity : 350



OKINAWA KARIYUSHI RESORT EXES NAHA

Room : 67 Maxim Capacity : 220



OKINAWA KARIYUSHI BEACH RESORT OCEAN SPA

Room : 516 Maxim Capacity : 1500



OKINAWA KARIYUSHI LCH RESORT on The Beach

Room : 117 Maxim Capacity : 310



OKINAWA KARIYUSHI LCH Izumizaki

Room : 58 Maxim Capacity : 58

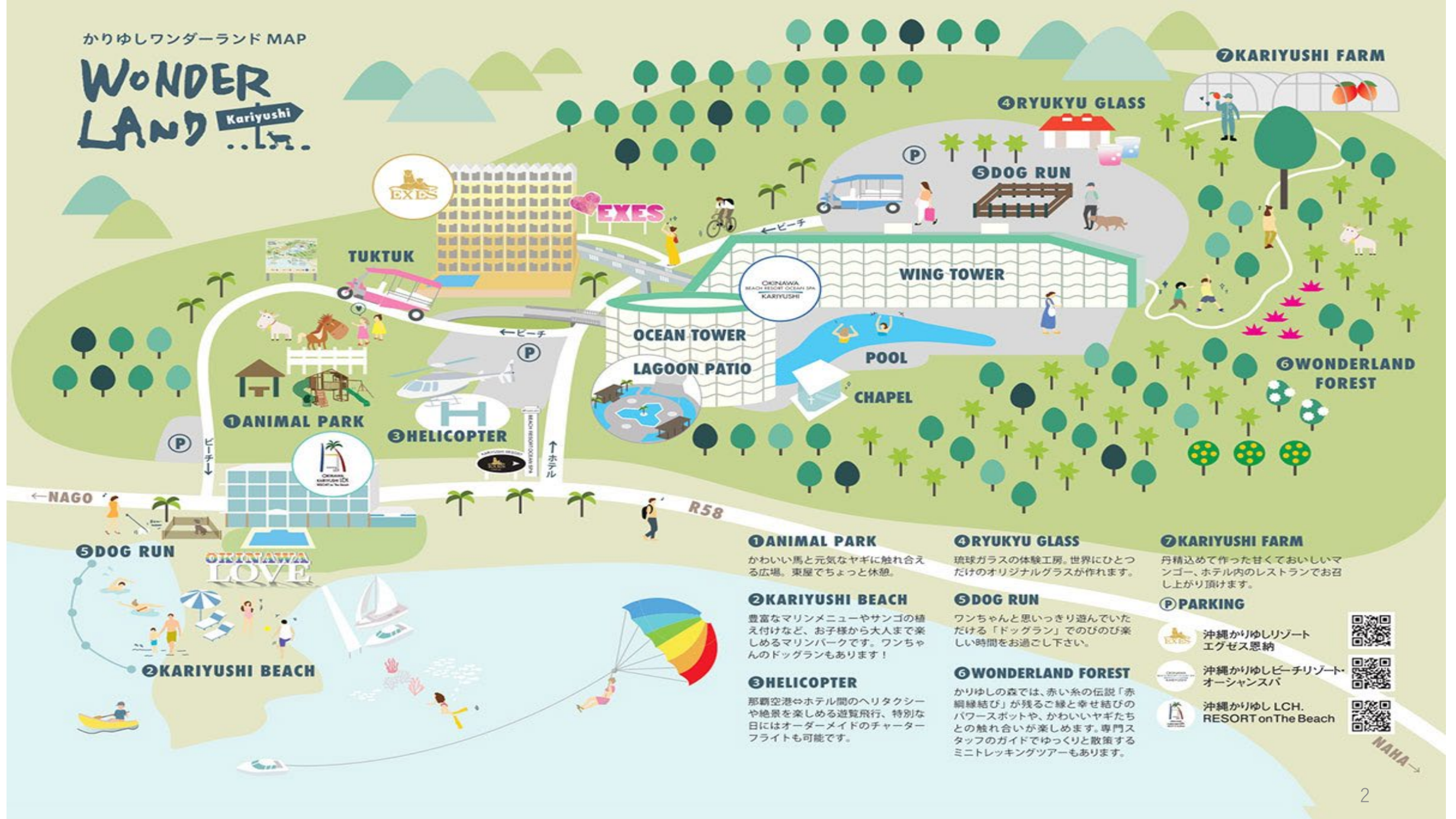


OKINAWA KARIYUSHI LCH 2nd Izumizaki

Room : 26 Maxim Capacity : 26

Wonder Land

Kariyushi



① ANIMAL PARK

かわいい馬と元気なヤギに触れ合える広場。東屋でちょっと休憩。

② KARIYUSHI BEACH

豊富なマリネメニューやサンゴの植え付けなど、お子様から大人まで楽しめるマリネパークです。ワンちゃんのドッグランもあります！

③ HELICOPTER

那覇空港⇄ホテル間のヘリタクシーや絶景を楽しむ遊覧飛行、特別な日にはオーダーメイドのチャーターフライトも可能です。

④ RYUKYU GLASS

琉球ガラスの体験工房。世界にひとつだけのオリジナルグラスが作れます。

⑤ DOG RUN

ワンちゃんと思いきり遊んでいただけの「ドッグラン」でのびのび楽しい時間をお過ごし下さい。

⑥ WONDERLAND FOREST

かりゆしの森では、赤い糸の伝説「赤綱緑結び」が残るご縁と幸せ結びのパワースポットや、かわいいヤギたちとの触れ合いが楽しめます。専門スタッフのガイドでゆっくりと散策するミニトレッキングツアーもあります。

⑦ KARIYUSHI FARM

丹精込めて作った甘くておいしいマンゴー、ホテル内のレストランでお召し上がり頂けます。

P PARKING

沖縄かりゆしリゾート エグゼス恩納

沖縄かりゆしビーチリゾート・オーシャンスパ

沖縄かりゆし LCH. RESORT on The Beach



NAHA →



HOTEL PRIVATE BEACH
MARINE SPORTS & SNORKEL
& DIVING

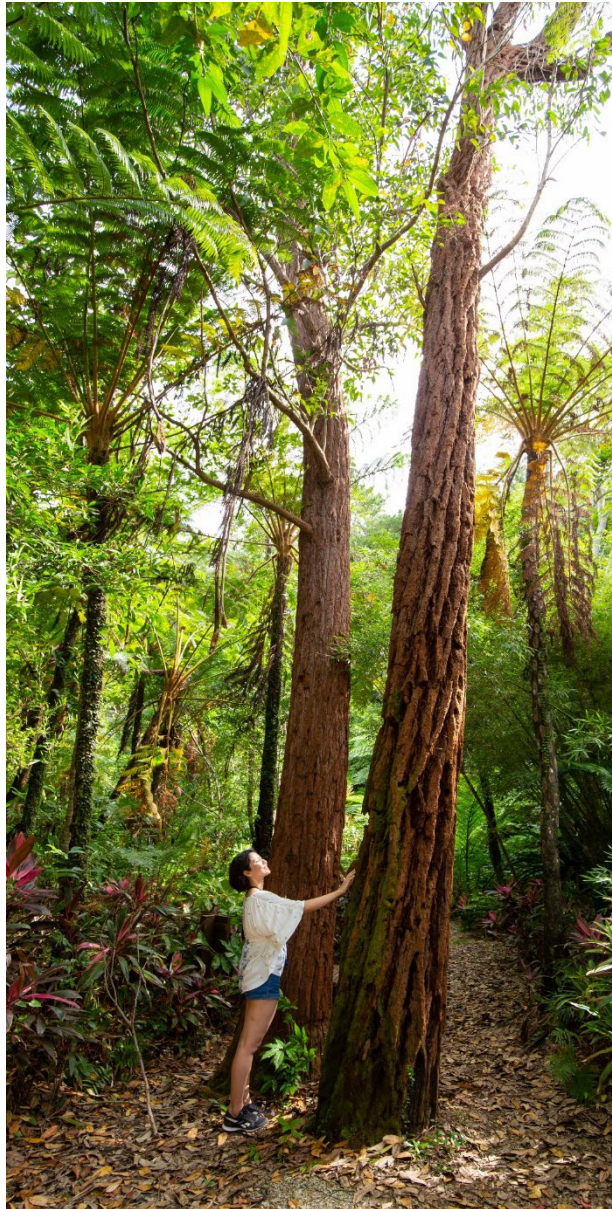




KARIYUSHI FOREST

Explore Nature with Fun Facts

Kariyushi Forest is located on Kariyushi Beach Resort in Onna Village, one of the best resort areas in Japan, where many hotels are located.



There are bright green trees, flowers, many living things such as birds, fishes, lizards, and insects lives in the Kariyushi Forest.

The giant “Flying Spider-monkey Tree Fern” that has inhabited the area since ancient times, visitors can feel as if they have been transported back in time to ancient times.



KARIYUSHI FARM

"Kariyushi Farm", located in Kariyushi Forest. Under the slogan of "Slow Food," the hotel's restaurant offers guests a variety of healthy and environmentally friendly Okinawan food products. The farm also offers hands-on agriculture activities, such as "making, seeing, touching, and eating," and guests can actually tour the farm while strolling along the boardwalk.

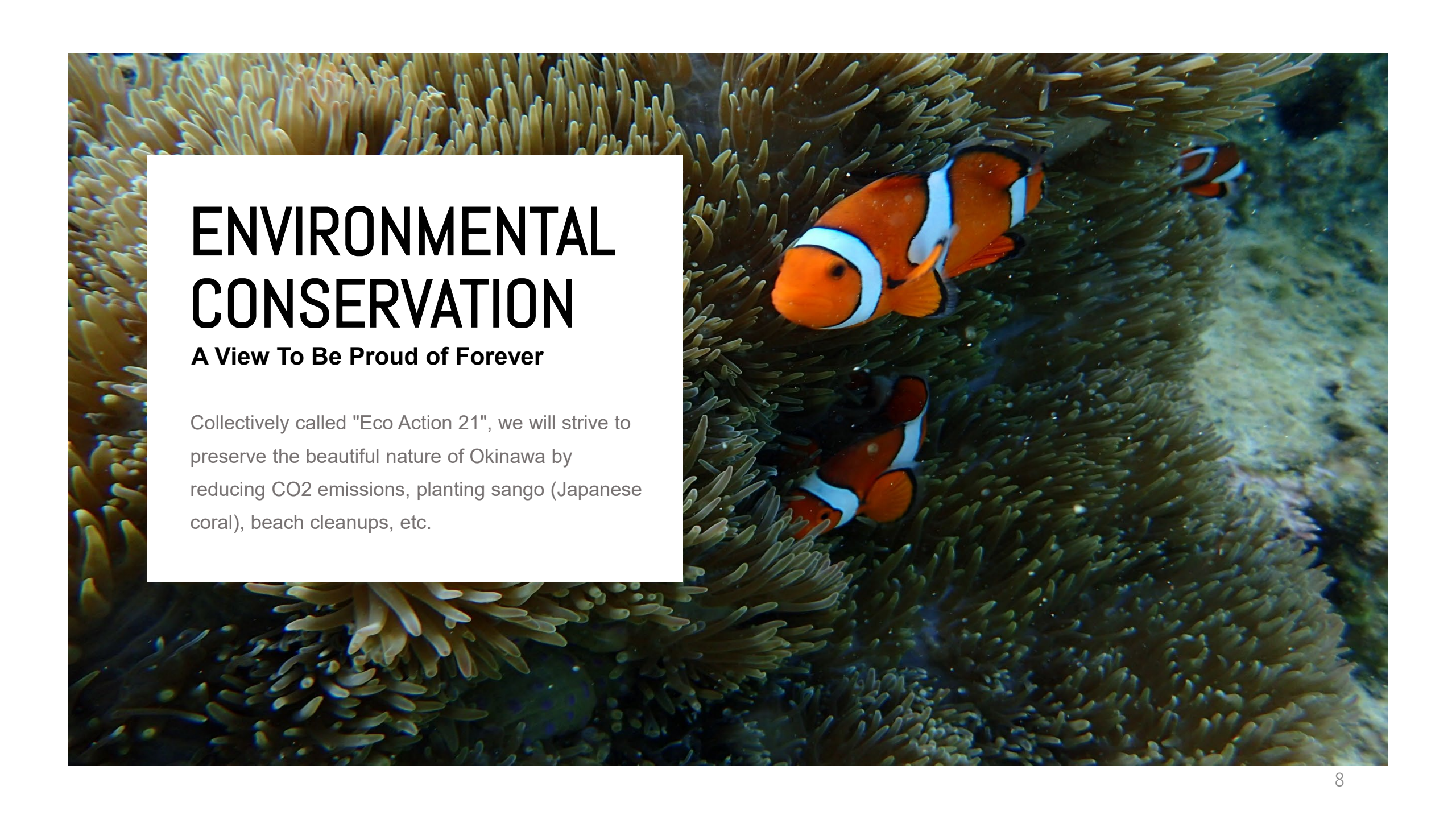


KARIYUSHI FOREST TREKKING

Vivid green trees, flowers, birds, and insects. Expert staff members will guide you on a slow, leisurely stroll through the "Kariyushi Forest," where many kinds of life live. You can also visit a power spot for marriage and happiness, where the legend of the red string "Akatsuna Enmusubi" still remains, and interact with cute goats.

Tour Schedule	8:30 AM – 9:30 AM everyday (approximately 60 minutes)
Meeting Location	OKINAWA KARIYUSHI BEACH RESORT OCEAN SPA
Fee	¥1,000 per person



A photograph of several clownfish swimming in a sea anemone. The anemone has many long, thin, yellowish tentacles. The clownfish are orange with white stripes and black outlines. The background is a deep blue-green color, suggesting an underwater environment.

ENVIRONMENTAL CONSERVATION

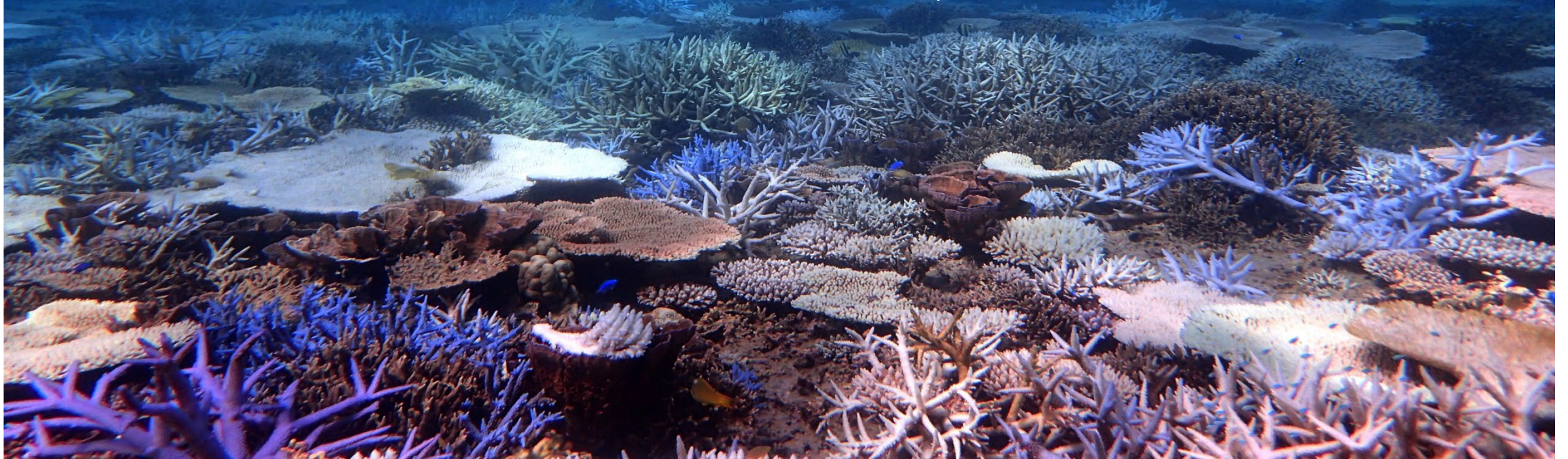
A View To Be Proud of Forever

Collectively called "Eco Action 21", we will strive to preserve the beautiful nature of Okinawa by reducing CO2 emissions, planting sango (Japanese coral), beach cleanups, etc.

ABOUT "CORAL RESTORATION PROJECT"

A large-scale coral reef bleaching event that began in Australia's Great Barrier Reef in early 1998 was widely observed in coral reef areas in the northern hemisphere in July 1998. The bleaching phenomenon was seen throughout Okinawa Prefecture, including Ishinishi Lagoon on Ishigaki Island, Okinawa. The cause is said to be the effect of rising sea water temperatures associated with the El Niño phenomenon.

Kariyushi Hotels has also benefited from economic activities utilizing Okinawa's rich marine resources. The coral regeneration project was initiated as one of the conservation activities to address the coral extinction crisis caused by the coral bleaching phenomenon and the increasing predation damage caused by the massive outbreak of crown-of-thorns starfish, the natural enemy of corals, in Japan and the Okinawan seas.



CORAL WORKSHOP

This program will also help protect coral reefs in Okinawa, which are feared to be severely damaged due to the bleaching phenomenon and starfish feeding damage. After learning about coral and the ocean in a fun and informative class, participants board a glass boat and make small coral seedlings in a special container. It is also perfect for free research!





KARIYUSHI BEACH CORAL WORKSHOP

“Kariyushi Sango Park” in Kariyushi Beach offers “Coral Workshop” to communicate the importance of the ocean and coral and our conservation activities to many people through "learning" and "experience".
For more details about the workshop is available via QR code below.



【Reservation】

Reservation is required from 1 month in advance to the day before.
TEL.0980-52-4093 Reef Resort Kariyushi (8:00-18:00)

LIVE EVENTS & ENTERTAINMENT

Fun and Wonderful Stage





VARIETY OF ENTERTAINMENT

A variety of entertainment, including live music and dancing, can be enjoyed at the poolside of Okinawa Kariyushi Beach Resort Ocean Spa and at various locations in the group hotels.



Eisa It is a traditional art form danced during the old Bon Festival. Currently, it is performed not only during the old Bon festival season, but also at weddings and other celebrations.

OKINAWAN TRADITIONAL PERFORMING ARTS

Experience the traditional culture of Okinawa such as folk entertainment and Sanshin music, as well as Ryukyuan performing arts including the Ryukyuan dance.




Shimauta & Folk Song

There is a wide range of genres and styles, from Okinawan classical music to familiar island songs and POPs, centered around the sound of the sanshin (Okinawan guitar).



Ryukyuan Dance

You will see elegant and leisurely court dances performed to welcome Chinese people, and fast-paced and comical miscellaneous dances that express the personalities of common people and the love lives of men and women.



ENJOYABLE STAGE

The events are held on weekends, and are open to guests of

- Okinawa Kariyushi Beach Resort Ocean Spa
- OKINAWA KARIYUSHI RESORT EXES
- ONNA,RESORT on The Beach guests.